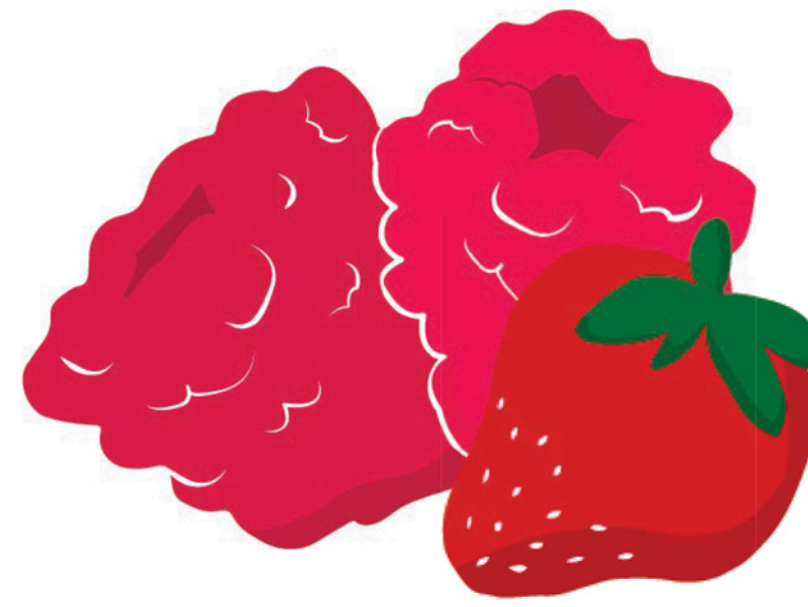


# Knowlton Academy

## Lac Brome



The Knowlton Academy project, located in Lac-Brome in the Montérégie region, aims to strengthen the local economy and agriculture through new partnerships with neighbouring farms. Indeed, thanks to the Farm to School grant, the school aims to develop its local food supply network to provide its salad bar with fresh produce throughout the week.

The school's 'Secret Garden' already allows students to learn about the production and harvesting phases of the food they eat. In addition, thanks to an indoor gardening device that grows small edible sprouts, local supply during the cold season is no longer a problem for the school!

The salad bar project is now an integral part of the curriculum and food literacy is being brought into the classroom. Students have the opportunity to develop their critical thinking skills and their knowledge of agriculture and food under the supervision and enthusiasm of parents and numerous volunteers.



In partnership with :



Funded by:



Public Health  
Agency of Canada

Agence de la santé  
publique du Canada

